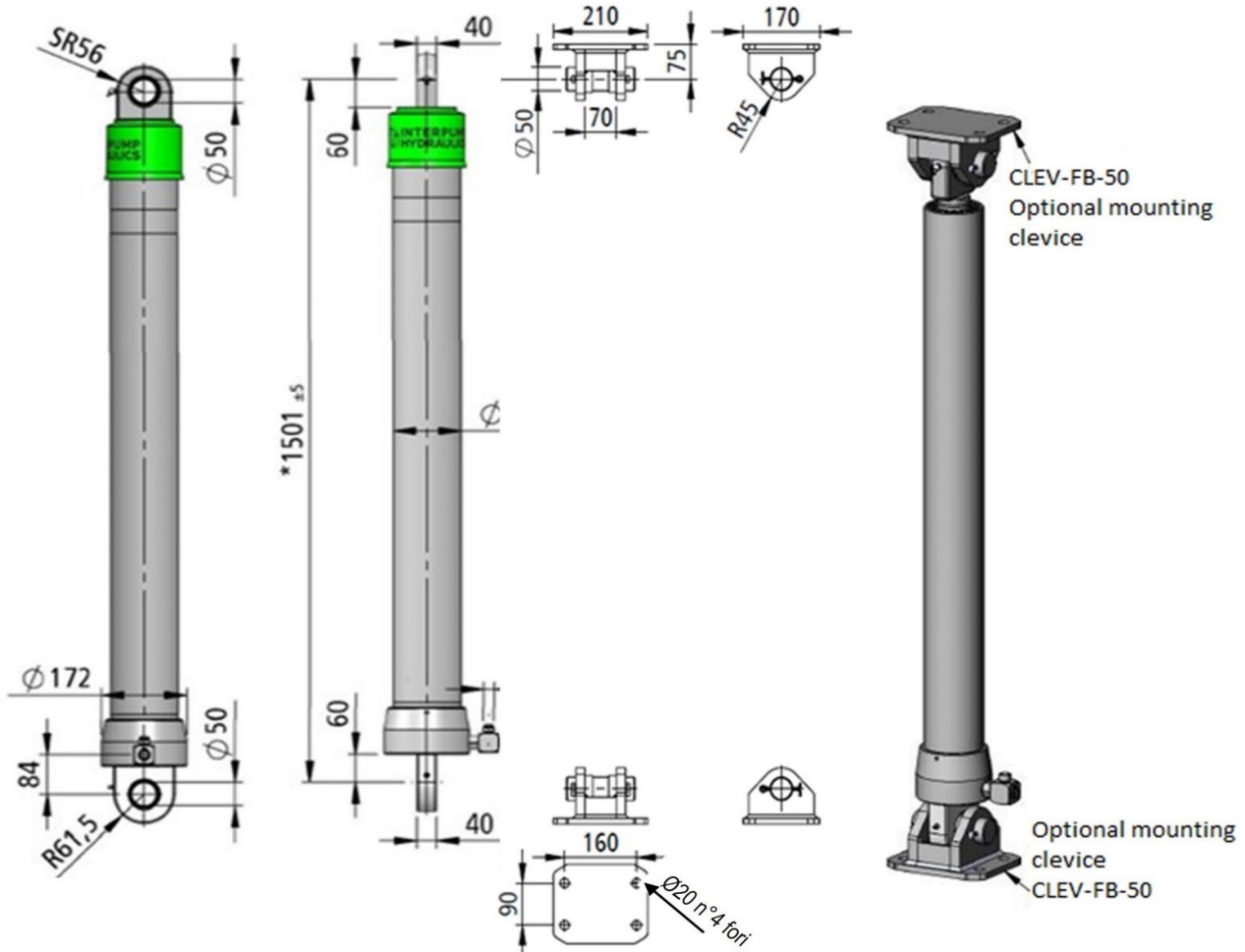




Part No. FBM5-22-3-3240-CR

Cylinder Mass 112 kg

Tipping Weight 22-45 ton

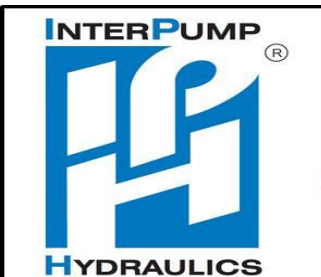


Mounting Dimension 1501 mm + 20 (-5;+30) mm min pull out Total Stroke 3240 mm Max Pressure 250 bar

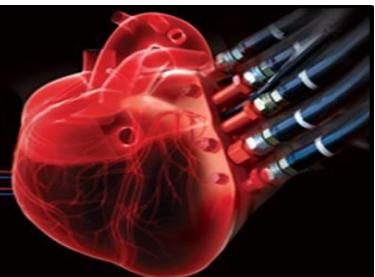
Stages	1	2	3	-	-	-	-	-	-	-	-	Number of Stages : 3
Diameter {mm}	116	90	79	-	-	-	-	-	-	-	-	
Stroke {mm}	1078	1080	1082	-	-	-	-	-	-	-	-	Total : 3240 mm
Thrust {kN} @200bar	211	151	98	-	-	-	-	-	-	-	-	Max.Allowable Thrust=120kN
Working Volume l				-	-	-	-	-	-	-	-	Total : 25 Litres +3 (Residual)

Technical Notes and Specifications:

- The normal application of a telescopic cylinder, is to lift up tipping bodies, loaded with different materials, and consequently discharge this material whilst the cylinder is extended along the length of its stroke.
- The body weight plus the maximum payload must be within the maximum specified tipping weight that may be raised by the cylinder. This value, calculated at the maximum pressure, is a rough indication of the tipping thrust of the cylinder and must be used as a first criteria for cylinder selection. The real tipping mass can only be calculated by the design engineer of the dump truck, and must take into account the geometry of the dump body and operating conditions.
- Never exceed the maximum rated thrust.
- Never exceed the maximum rated pressure.
- The cylinder has been designed for loads along the longitudinal axis; the cylinder is a lifting device only and may not be used as a structural member or be subject to any side load whatsoever. The design engineer must allow for a suitable stabilisation mechanism on the dump-truck body.
- Cylinder warranty does not apply to any kind of corrosion of coated or non coated parts.
- Maximum extension speed shall be less than 0,2 m/s.
- Allowable hydraulic oil temperature; between -40°C and +100°C.
- Enamel RAL9005 two-component solvent semi-glass finish 180 h spray salt test ISO 9227 rating 9 ISO 10289
- Chrome coating type CRN on telescopic stage 40 h spray salt test ISO 9227 rating 9 ISO 10289
- Refer to **Truck Equipment Pty Ltd** sales team for further information.



THE HEART OF YOUR HYDRAULICS
Truck Equipment
 Proven Reliability

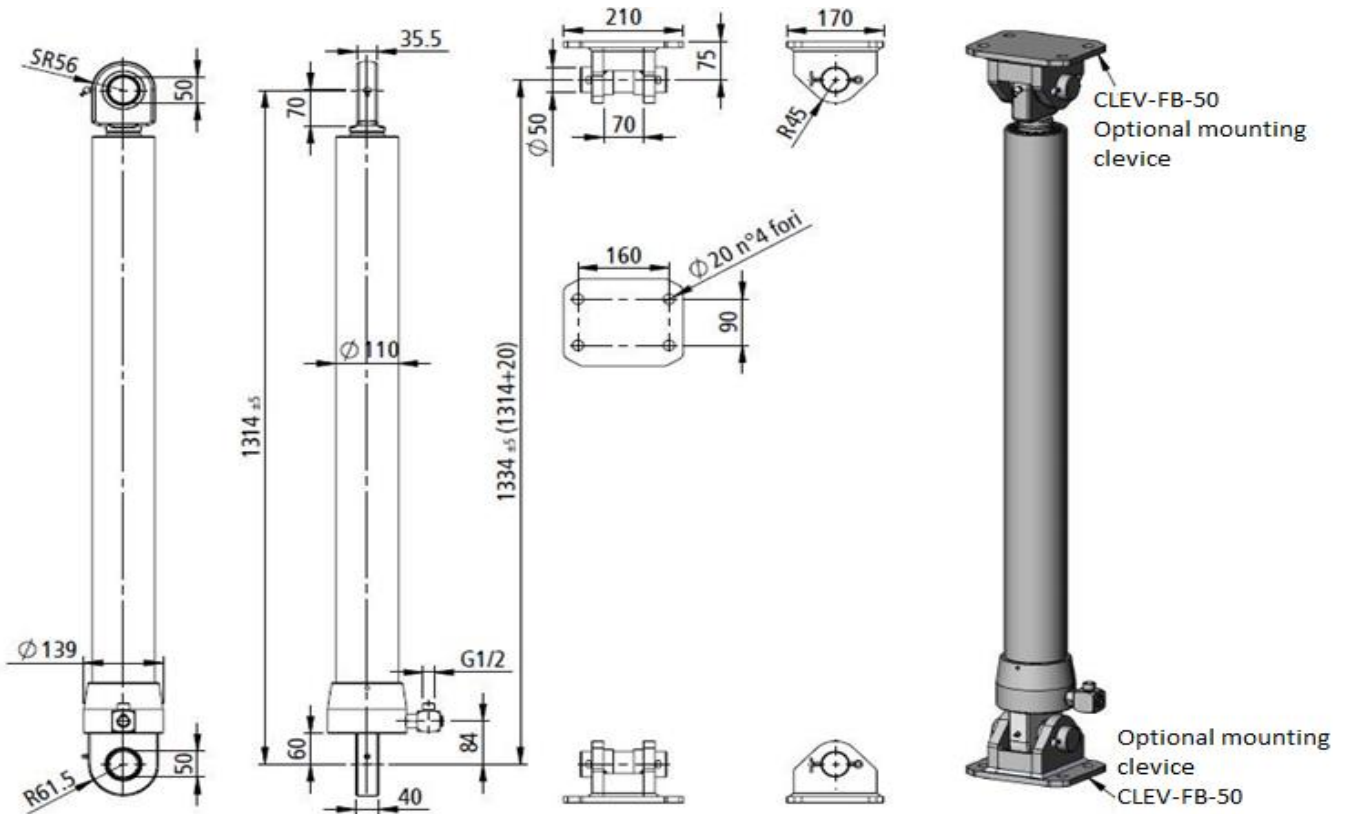




Part No. FBMT-11-3-2930-CR

Cylinder Mass 80 kg

Tipping Weight 9-11 ton

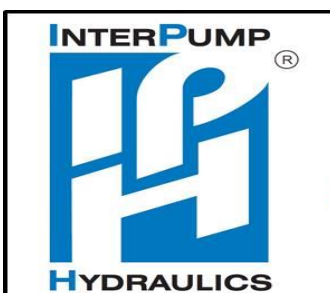


Mounting Dimension 1314 mm + 20 (-5;+30) mm min pull out Total Stroke 2930 mm Max Pressure 220 bar

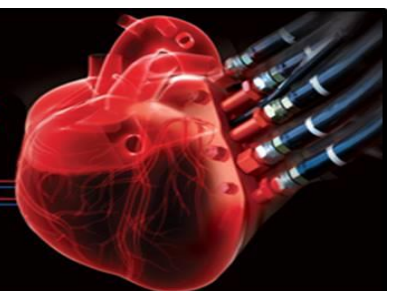
Stages	1	2	3	-	-	-	-	-	-	-	-	Number of Stages : 3
Diameter {mm}	90	75	60	-	-	-	-	-	-	-	-	
Stroke {mm}	977	977	976	-	-	-	-	-	-	-	-	Total : 2930 mm
Thrust {kN} at pmax	140	97	62	-	-	-	-	-	-	-	-	
Working Volume l	6.2	4.3	2.8	-	-	-	-	-	-	-	-	Total : 13,3 Litres

Technical Notes and Specifications:

- ~ The normal application of a telescopic cylinder, is to lift up tipping bodies, loaded with different materials, and consequently discharge this material whilst the cylinder is extended along the length of its stroke.
- ~ The body weight plus the maximum payload must be within the maximum specified tipping weight that may be raised by the cylinder. This value, calculated at the maximum pressure, is a rough indication of the tipping thrust of the cylinder and must be used as a first criteria for cylinder selection. The real tipping mass can only be calculated by the design engineer of the dump truck, and must take into account the geometry of the dump body and operating conditions.
- ~ Never exceed the maximum rated thrust.
- ~ Never exceed the maximum rated pressure.
- ~ The cylinder has been designed for loads along the longitudinal axis; the cylinder is a lifting device only and may not be used as a structural member or be subject to any side load whatsoever. The design engineer must allow for a suitable stabilisation mechanism on the dump-truck body.
- ~ Cylinder warranty does not apply to any kind of corrosion of coated or non coated parts.
- ~ Maximum extension speed shall be less than 0,2 m/s.
- ~ Allowable hydraulic oil temperature; between -40°C and +100°C.
- ~ Refer to **Truck Equipment Pty Ltd** sales team for further information.



THE HEART OF YOUR HYDRAULICS
Truck Equipment
 Proven Reliability

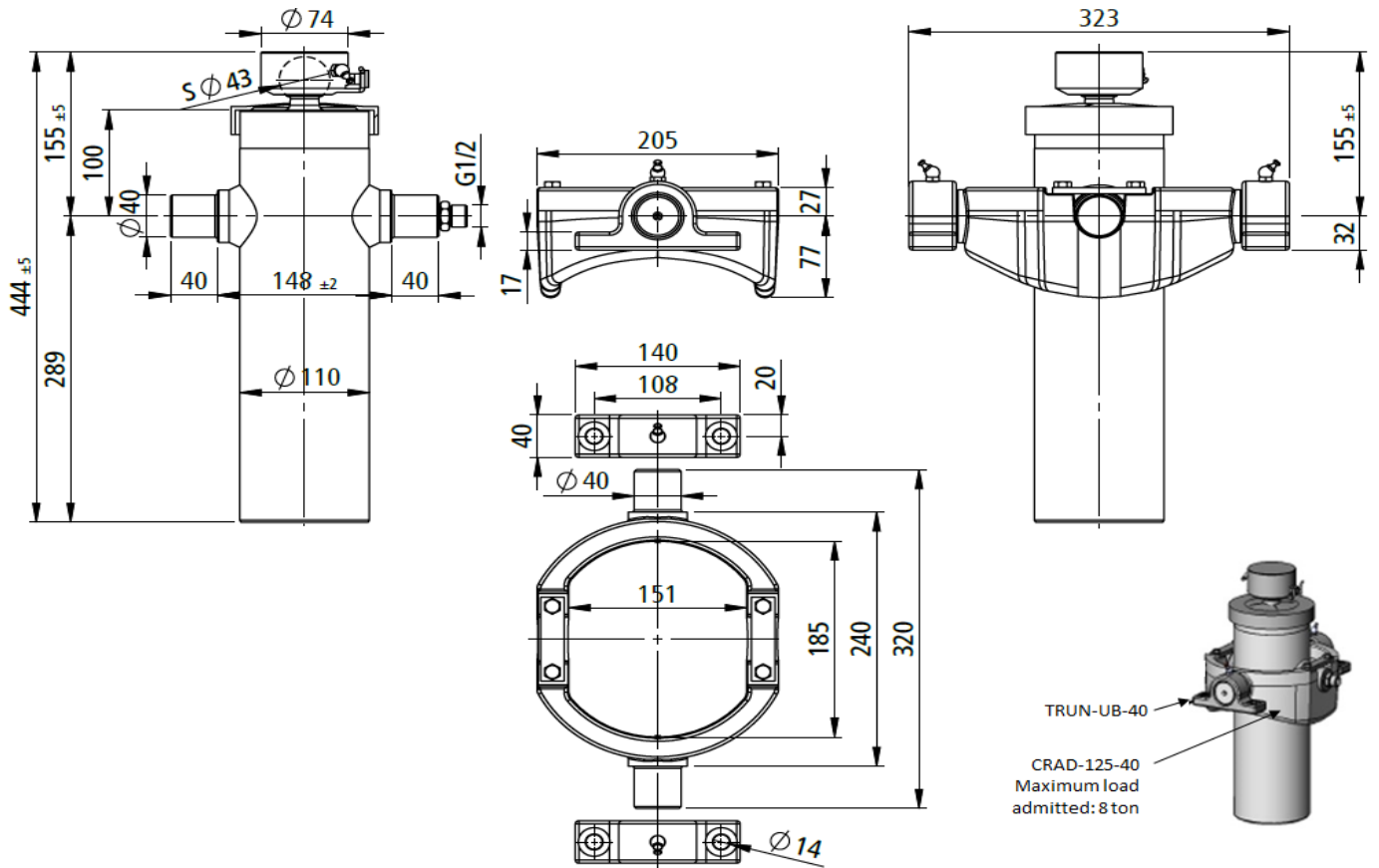




Part No. UBAG-06-3-0850-CR

Cylinder Mass 27 kg

Tipping Weight 3-6 ton



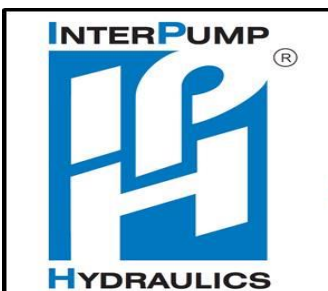
TRUN-UB-40
CRAD-125-40
Maximum load admitted: 8 ton

Mounting Dimension 155 mm + 20 mm min pull out Total Stroke 850 mm Max Pressure 200 bar

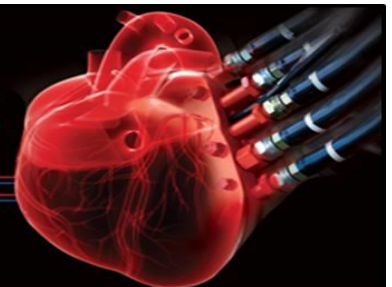
Stages	1	2	3	-	-	-	-	-	-	-	Number of Stages : 3
Diameter {mm}	90	75	60	-	-	-	-	-	-	-	
Stroke {mm}	281	283	286	-	-	-	-	-	-	-	Total : 850 mm
Thrust {kN} at pmax	140	97	62	-	-	-	-	-	-	-	Max admitted thrust: 54 kN
Working Volume l	1.8	1.2	0.8	-	-	-	-	-	-	-	Total : 3,8 Litres

Technical Notes and Specifications:

- ~ The normal application of a telescopic cylinder, is to lift up tipping bodies, loaded with different materials, and consequently discharge this material whilst the cylinder is extended along the length of its stroke.
- ~ The body weight plus the maximum payload must be within the maximum specified tipping weight that may be raised by the cylinder. This value, calculated at the maximum pressure, is a rough indication of the tipping thrust of the cylinder and must be used as a first criteria for cylinder selection. The real tipping mass can only be calculated by the design engineer of the dump truck, and must take into account the geometry of the dump body and operating conditions.
- ~ Never exceed the maximum rated thrust.
- ~ Never exceed the maximum rated pressure.
- ~ The cylinder has been designed for loads along the longitudinal axis; the cylinder is a lifting device only and may not be used as a structural member or be subject to any side load whatsoever. The design engineer must allow for a suitable stabilisation mechanism on the dump-truck body.
- ~ Cylinder warranty does not apply to any kind of corrosion of coated or non coated parts.
- ~ Maximum extension speed shall be less than 0,2 m/s.
- ~ Allowable hydraulic oil temperature; between -40°C and +100°C.
- ~ Refer to **Truck Equipment Pty Ltd** sales team for further information.



THE HEART OF YOUR HYDRAULICS
Truck Equipment
Proven Reliability

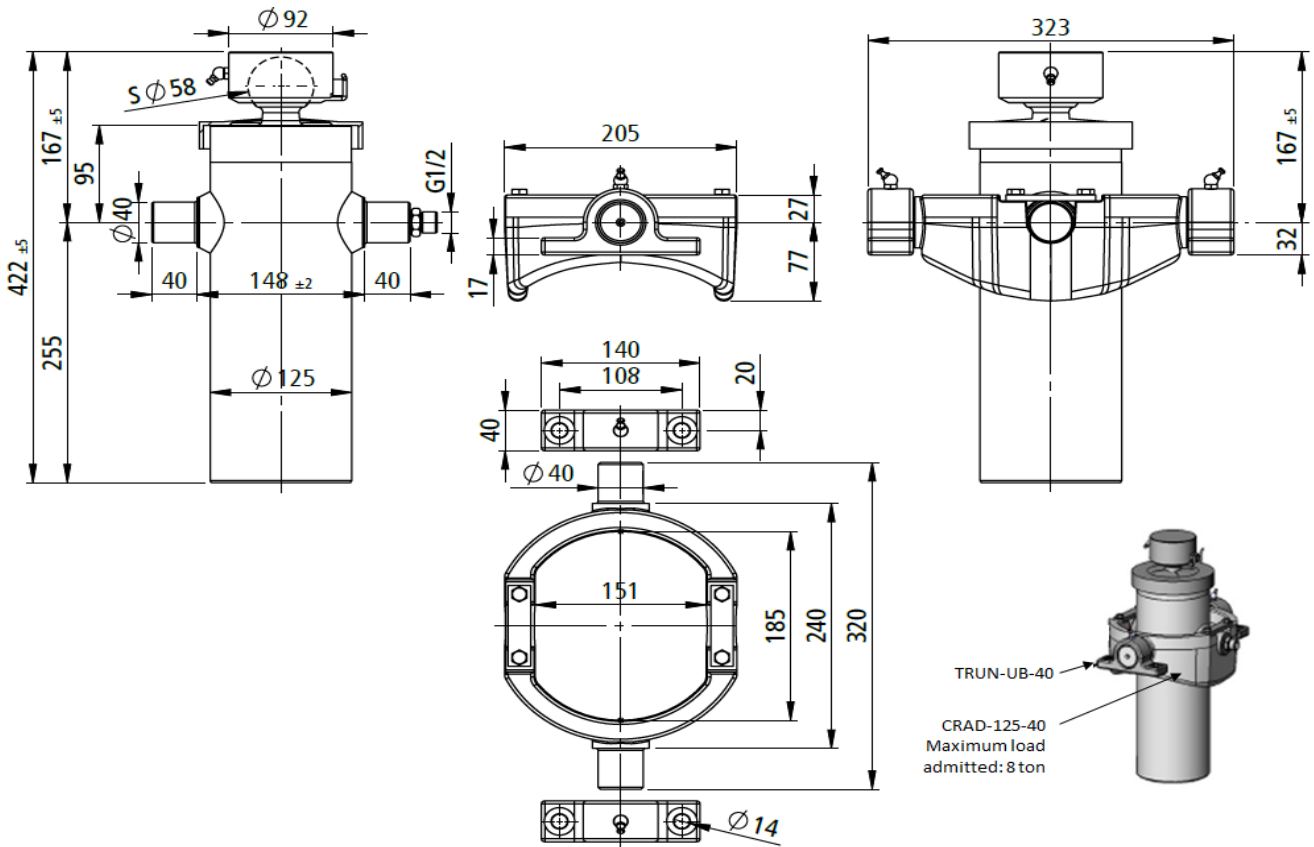




Part No. UBAG-08-4-0985-CR

Cylinder Mass 29 kg

Tipping Weight 4-8 ton



Mounting Dimension 167 mm + 20 mm min pull out

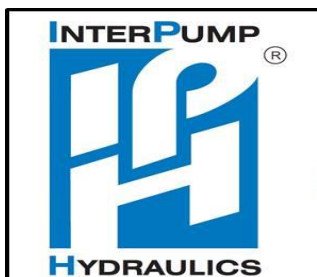
Total Stroke 985 mm

Max Pressure 200 bar

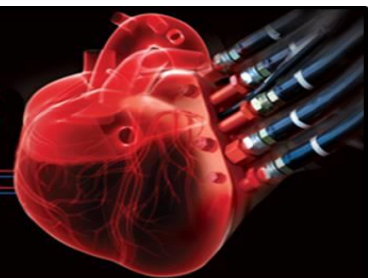
Stages	1	2	3	4	-	-	-	-	-	-	-	Number of Stages : 4
Diameter {mm}	105	90	75	60	-	-	-	-	-	-	-	
Stroke {mm}	255	241	243	246	-	-	-	-	-	-	-	Total : 985 mm
Thrust {kN} at pmax	173	127	88	57	-	-	-	-	-	-	-	Max admitted thrust: 77 kN
Working Volume l	2.1	1.5	1.1	0.7	-	-	-	-	-	-	-	Total : 5,4 Litres

Technical Notes and Specifications:

- ~ The normal application of a telescopic cylinder, is to lift up tipping bodies, loaded with different materials, and consequently discharge this material whilst the cylinder is extended along the length of its stroke.
- ~ The body weight plus the maximum payload must be within the maximum specified tipping weight that may be raised by the cylinder. This value, calculated at the maximum pressure, is a rough indication of the tipping thrust of the cylinder and must be used as a first criteria for cylinder selection. The real tipping mass can only be calculated by the design engineer of the dump truck, and must take into account the geometry of the dump body and operating conditions.
- ~ Never exceed the maximum rated thrust.
- ~ Never exceed the maximum rated pressure.
- ~ The cylinder has been designed for loads along the longitudinal axis; the cylinder is a lifting device only and may not be used as a structural member or be subject to any side load whatsoever. The design engineer must allow for a suitable stabilisation mechanism on the dump-truck body.
- ~ Cylinder warranty does not apply to any kind of corrosion of coated or non coated parts.
- ~ Maximum extension speed shall be less than 0,2 m/s.
- ~ Allowable hydraulic oil temperature; between -40°C and +100°C.
- ~ Refer to **Truck Equipment Pty Ltd** sales team for further information.



**THE HEART OF
YOUR HYDRAULICS**
Truck Equipment
Proven Reliability

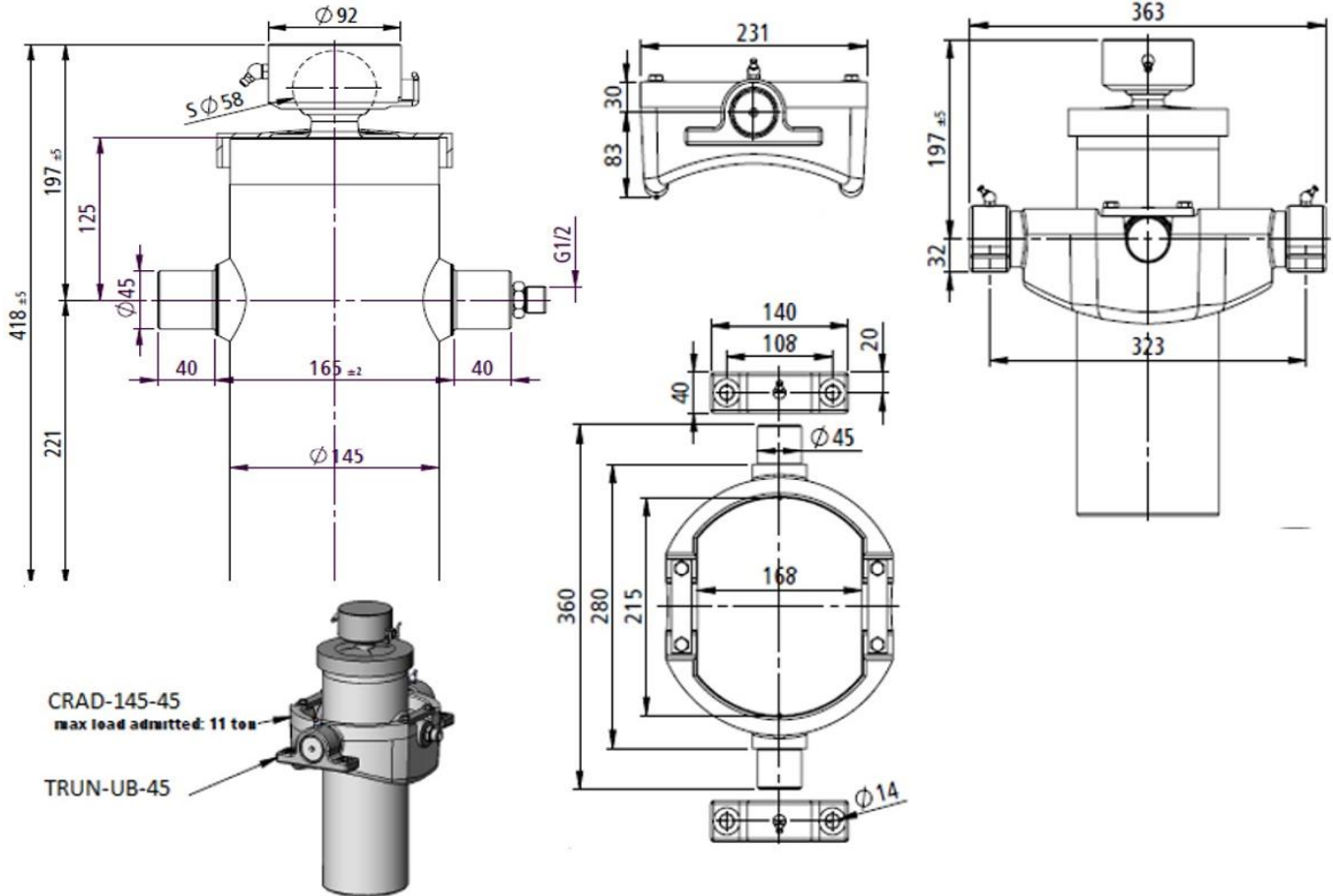




Part No. UBAG-09-5-1175-CR

Cylinder Mass 44 kg

Tipping Weight 9-17 ton

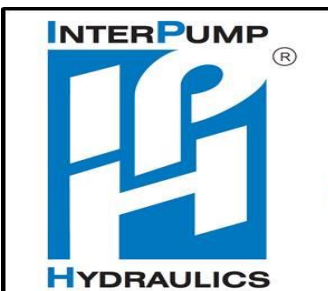


Mounting Dimension 197 mm + 20 mm min pull out Total Stroke 1175 mm Max Pressure 200 bar

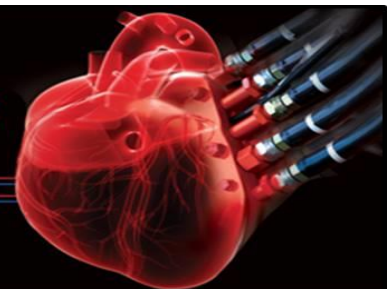
Stages	1	2	3	4	5	-	-	-	-	-	-	Number of Stages : 5
Diameter {mm}	120	105	90	75	60	-	-	-	-	-	-	
Stroke {mm}	241	241	228	231	237	-	-	-	-	-	-	Total : 1175 mm
Thrust {kN} at pmax	226	173	127	88	57	-	-	-	-	-	-	Max admitted thrust: 90 kN
Working Volume l	2.7	2.1	1.4	1,0	0.7	-	-	-	-	-	-	Total : 9,9 Litres

Technical Notes and Specifications:

- ~ The normal application of a telescopic cylinder, is to lift up tipping bodies, loaded with different materials, and consequently discharge this material whilst the cylinder is extended along the length of its stroke.
- ~ The body weight plus the maximum payload must be within the maximum specified tipping weight that may be raised by the cylinder. This value, calculated at the maximum pressure, is a rough indication of the tipping thrust of the cylinder and must be used as a first criteria for cylinder selection. The real tipping mass can only be calculated by the design engineer of the dump truck, and must take into account the geometry of the dump body and operating conditions.
- ~ Never exceed the maximum rated thrust.
- ~ Never exceed the maximum rated pressure.
- ~ The cylinder has been designed for loads along the longitudinal axis; the cylinder is a lifting device only and may not be used as a structural member or be subject to any side load whatsoever. The design engineer must allow for a suitable stabilisation mechanism on the dump-truck body.
- ~ Cylinder warranty does not apply to any kind of corrosion of coated or non coated parts.
- ~ Maximum extension speed shall be less than 0,2 m/s.
- ~ Allowable hydraulic oil temperature; between -40°C and +100°C.
- ~ Refer to **Truck Equipment Pty Ltd** sales team for further information.



THE HEART OF YOUR HYDRAULICS
Truck Equipment
 Proven Reliability

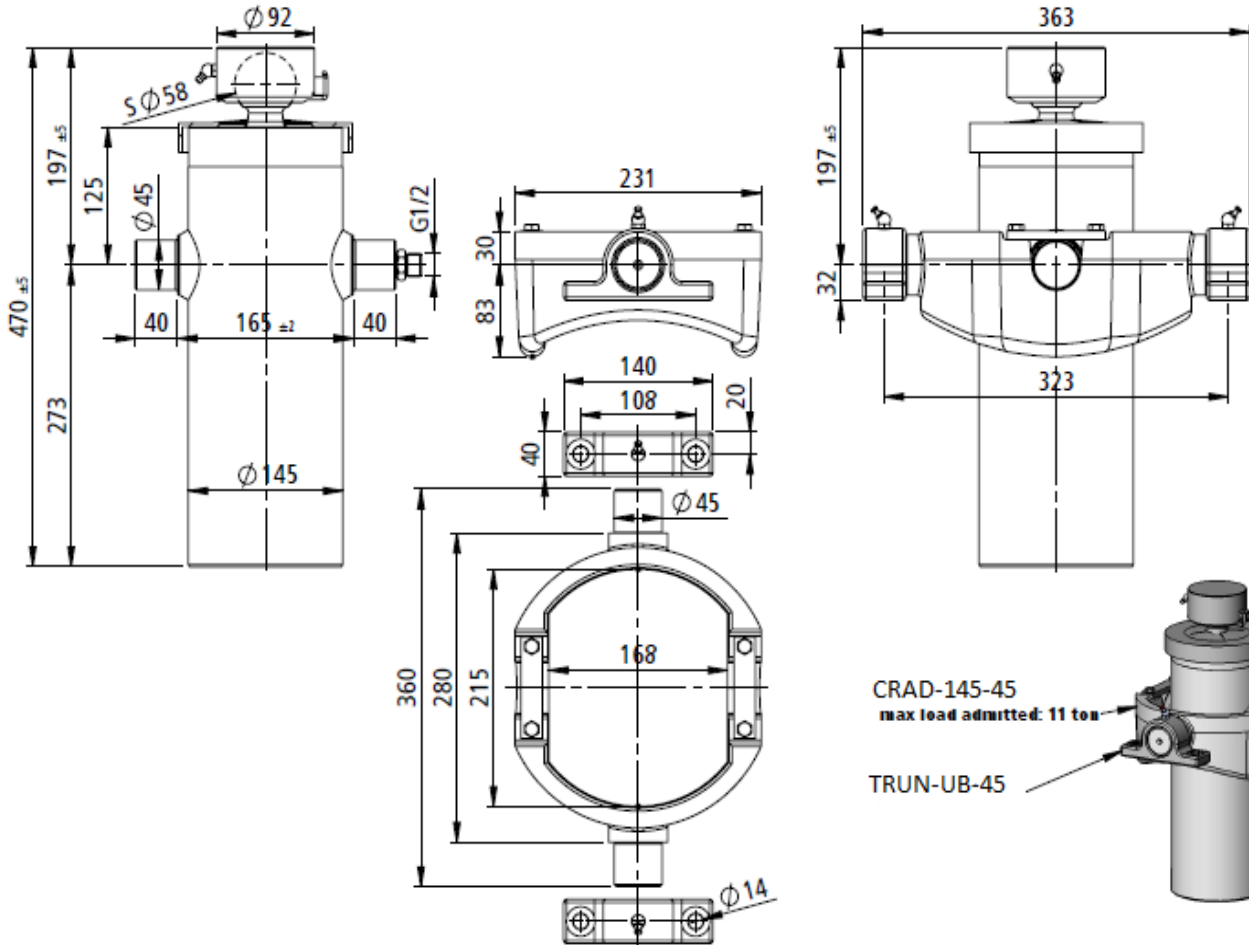




Part No. UBAG-09-5-1435-CR

Cylinder Mass 44 kg

Tipping Weight 9-17 ton

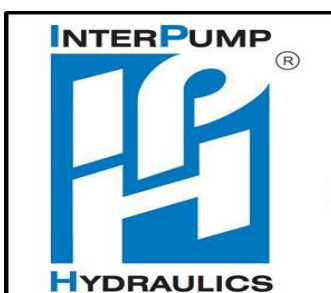


Mounting Dimension 197 mm + 20 mm min pull out Total Stroke 1435 mm Max Pressure 200 bar

Stages	1	2	3	4	5	-	-	-	-	-	-	Number of Stages : 5
Diameter {mm}	120	105	90	75	60	-	-	-	-	-	-	
Stroke {mm}	293	293	280	283	286	-	-	-	-	-	-	Total : 1435 mm
Thrust {kN} at pmax	226	173	127	88	57	-	-	-	-	-	-	Max admitted thrust: 90 kN
Working Volume l	3.3	2.5	1.8	1.3	0.8	-	-	-	-	-	-	Total : 9,7 Litres

Technical Notes and Specifications:

- ~ The normal application of a telescopic cylinder, is to lift up tipping bodies, loaded with different materials, and consequently discharge this material whilst the cylinder is extended along the length of its stroke.
- ~ The body weight plus the maximum payload must be within the maximum specified tipping weight that may be raised by the cylinder. This value, calculated at the maximum pressure, is a rough indication of the tipping thrust of the cylinder and must be used as a first criteria for cylinder selection. The real tipping mass can only be calculated by the design engineer of the dump truck, and must take into account the geometry of the dump body and operating conditions.
- ~ Never exceed the maximum rated thrust.
- ~ Never exceed the maximum rated pressure.
- ~ The cylinder has been designed for loads along the longitudinal axis; the cylinder is a lifting device only and may not be used as a structural member or be subject to any side load whatsoever. The design engineer must allow for a suitable stabilisation mechanism on the dump-truck body.
- ~ Cylinder warranty does not apply to any kind of corrosion of coated or non coated parts.
- ~ Maximum extension speed shall be less than 0,2 m/s.
- ~ Allowable hydraulic oil temperature; between -40°C and +100°C.
- ~ Refer to **Truck Equipment Pty Ltd** sales team for further information.



THE HEART OF YOUR HYDRAULICS
Truck Equipment
 Proven Reliability

